

This Week's Highlight – **Greene County, Pennsylvania**

BASIN Digest

A Weekly Overview of Basin Activity August 9 - 15, 2021

The Basin Digest update presents the rig activity, product pricing, and permitting information for the six-state region referred to as the Appalachian Basin.

The Basin Digest is based primarily on data from JKPC's [Appalachian Basin Database](#) covering OH, PA, WV, KY, VA and NY. The database is derived from state reported data and Frac Focus data and includes all horizontal wells ranging from permitted status to producing. Formations in the database include Burkett (Geneseo), Marcellus, Utica, Lower Huron, Clinton and others.

We want your feedback!

Is there an area of horizontal wells that you would like to see in our newsletter as a highlight? Tell us what you would like to see in Basin Digest. [Click here to submit your questions or feedback.](#)

Rig Activity Summary

The table below presents the average weekly horizontal rig count based on information from Baker Hughes and Rig Data.

STATE	WEEK 1	WEEK 2	WEEK 3	WEEK 4
OH	12	11	-	-
PA	19	21	-	-
WV	10	10	-	-
VA	0	0	-	-
KY	0	0	-	-
NY	0	0	-	-
TOTAL	41	42	-	-

Product Pricing Summary

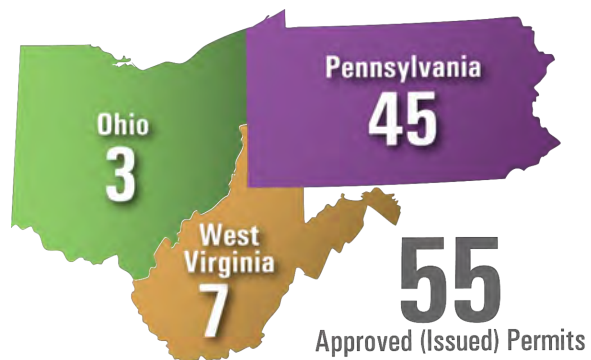
The table below presents the closing weekly prices based on various public data sources (ERGON/DIRECT ENERGY/ICE).

PRODUCT	WEEK 1	WEEK 2	WEEK 3	WEEK 4
Oil – Crude Tier I	67.280	67.440	-	-
Marcellus-Utica Med	67.280	67.440	-	-
Marcellus-Utica Light	58.280	58.440	-	-
Marcellus-Utica Cond	53.280	53.440	-	-
Natural Gas HH	4.140	3.861	-	-
Natural Gas DTI	2.983	2.851	-	-
Natural Gas TCO	3.280	3.089	-	-
NGL - Y Grade	36.691	37.209	-	-

Permitting Summary by State

The table below presents the approved (issued) permits by week based on various state public data sources (PADEP).

STATE	WEEK 1	WEEK 2	WEEK 3	WEEK 4	TOTAL
OH	3	0	-	-	3
PA	11	34	-	-	45
WV	0	7	-	-	7
TOTAL	14	41	-	-	55



The Virginia, Kentucky, and New York data is not up to date although there has been little recent horizontal activity in those states.

The table (below) presents a breakout of the approved (issued) permits for the week from **August 9 - 15, 2021**

STATE	OPERATOR	NEW	MODIFIED	RENEWED	TOTAL
PA	Olympus	Allegheny - 3	-	-	3
PA	Pennenergy	Butler - 1	-	-	1
PA	Laurel Mountain Production	-	Clarion - 1	-	1
PA	EQT	-	-	Greene - 2	2
PA	Rice	Greene - 2	-	-	2
PA	Cabot	Susquehanna - 10	Susquehanna - 1	-	11
PA	Repsol	Tioga - 7	-	-	7
PA	Range Resources	-	-	Washington - 1	1
PA	EQT	-	-	Washington - 1	1
PA	Olympus	Westmoreland - 5	-	-	5
WV	EQT	Wetzel - 7	-	-	7
TOTAL		35	2	4	41

Greene County, Pennsylvania

The table (below) presents the approved (issued) permits by year based on various state public data sources (PADEP).

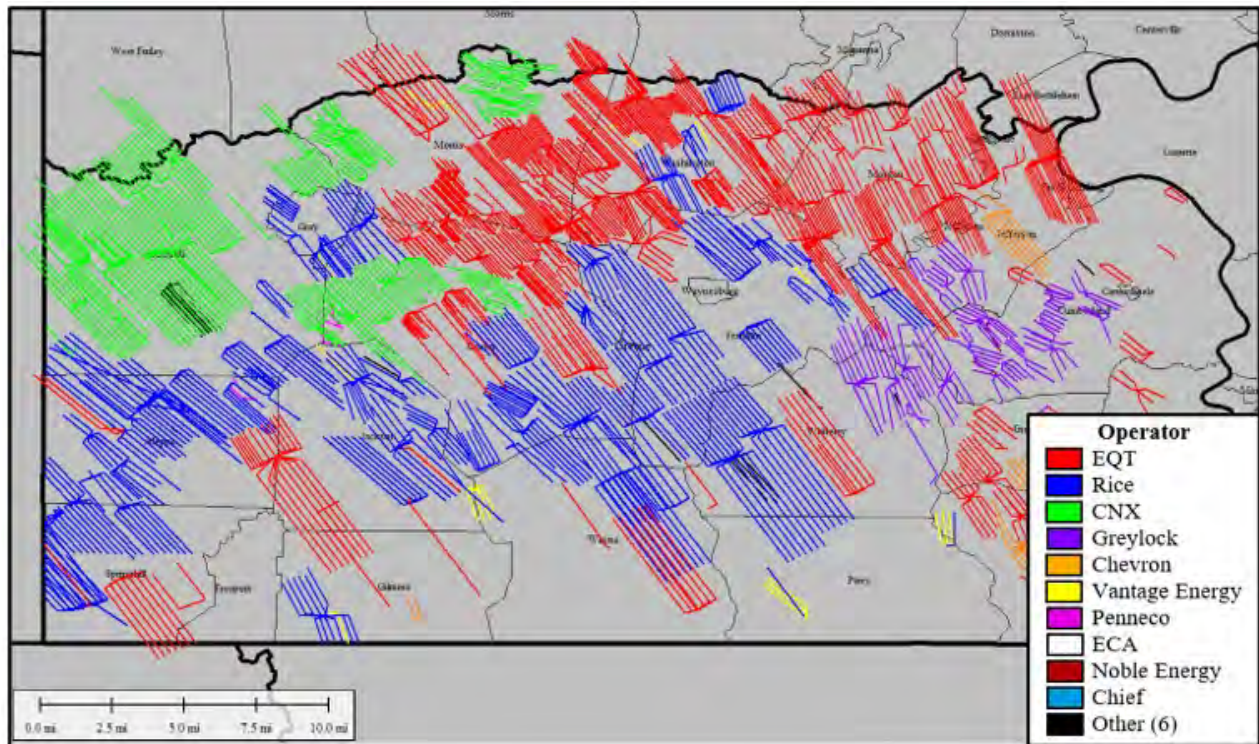
Permit Summary

YEAR	TOTAL
Prior	111
2010	98
2011	127
2012	92
2013	156
2014	230
2015	94
2016	150
2017	274
2018	127
2019	142
2020	89
2021	11
TOTAL	1,701

Well Count by Operator by Status

OPERATOR	PERM	SPUD	DRLD	COMP	PROD	SI	TOTAL
EQT	115	61	5	2	563	9	755
Rice	71	73	13	5	282	7	451
CNX	22	13	18	2	219	1	275
Greylock	1	4	-	-	117	-	122
Chevron	15	13	-	-	1	3	32
Vantage Energy	23	1	-	-	-	-	24
Penneco	-	-	-	-	-	9	9
Noble Energy	7	-	-	-	-	-	7
ECA	7	-	-	-	-	-	7
Chief	6	-	-	-	-	-	6
Other (6)	6	-	-	2	4	1	13
TOTAL	273	165	36	11	1,186	30	1,701

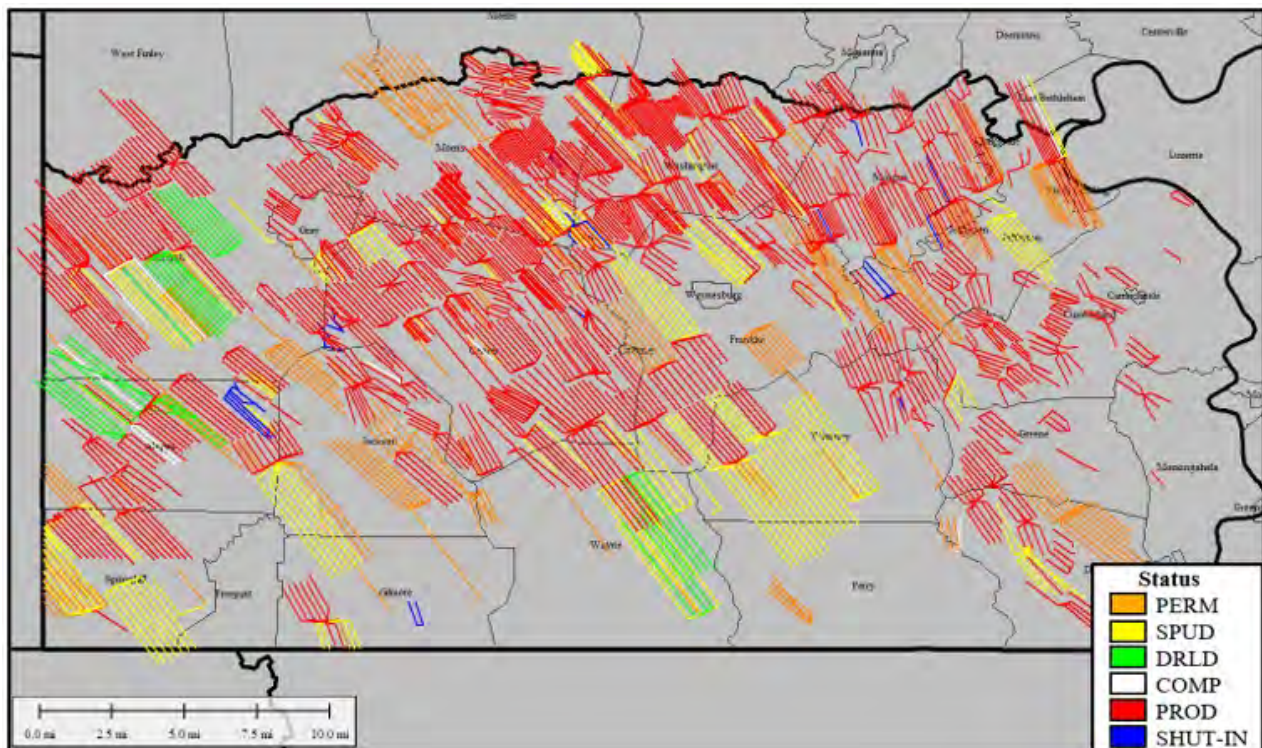
Greene County, Pennsylvania Map by Operator



Greene County, Pennsylvania Well Count by Status by Reservoir

RESERVOIR	PERM	SPUD	DRLD	COMP	PROD	SI	TOTAL
Marcellus	198	149	36	11	1,094	28	1,516
Utica	30	8	-	-	23	-	61
Burkett	45	8	-	-	69	2	124
TOTAL	273	165	36	11	1,186	30	1,701

Greene County, Pennsylvania Map Wells by Status



Greene County, Pennsylvania Well Production Summary

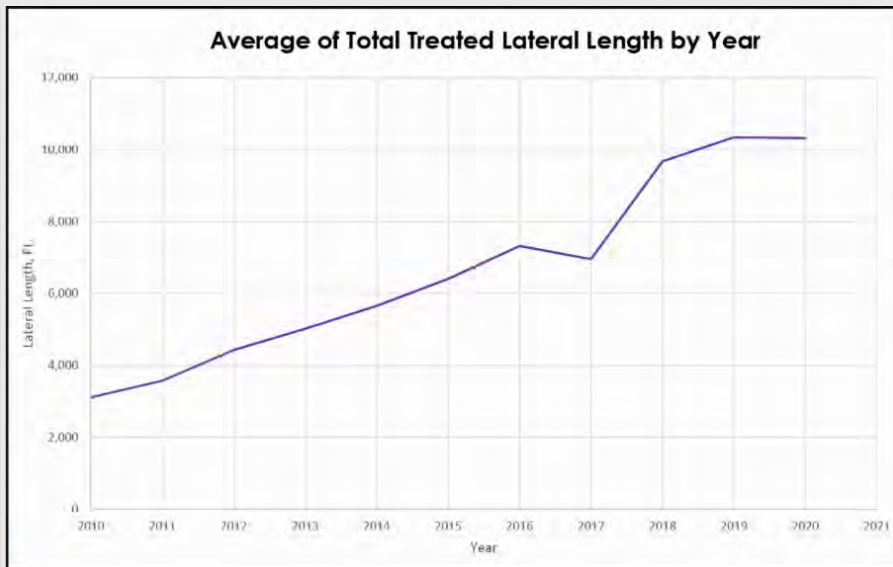
YEAR	GAS (MCF)	OIL (BBL)
Prior	7,176,349	0
2010	44,771,284	0
2011	115,606,203	0
2012	177,681,902	12,758
2013	314,256,865	74,577
2014	371,582,980	70,629
2015	529,453,170	2,264
2016	691,388,520	10,634
2017	658,071,049	11,553
2018	797,178,509	4,580
2019	968,045,582	2,543
2020	1,050,028,063	8,623
TOTAL	5,725,240,476	198,161

Greene County, Pennsylvania Producing Well Summary

YEAR	PROD WELLS BY YEAR	CUMULATIVE TOTAL
Prior	27	27
2010	63	90
2011	92	182
2012	104	286
2013	111	397
2014	118	515
2015	174	689
2016	94	783
2017	68	851
2018	149	1,000
2019	126	1,126
2020	58	1,184
2021	2	1,186
TOTAL	1,186	1,186

Greene County, Pennsylvania Producing Well Average TTL by Year

YEAR	AVERAGE TTL
2010	3,108
2011	3,568
2012	4,423
2013	5,017
2014	5,652
2015	6,405
2016	7,321
2017	6,951
2018	9,670
2019	10,344
2020	10,315
AVERAGE	6,616



JKPC, Inc. Proudly Serving the Appalachian Basin Since 1988

BASIN Digest
AN OVERVIEW OF BASIN ACTIVITY

View Basin Digest Past Issues

Keep informed about horizontal activity in the Appalachian Basin. [View Past Issues](#)

Add Additional Email to Receive Basin Digest



*Pride leads to conflict; those who take advice are wise.
Proverbs 13:10*

Proudly Serving the Appalachian Basin since 1988

jkpcinc.com | Phone: (740) 373-9522

Follow us on Facebook and Instagram

